



7 Lynchester Road

Greenville, SC 29615

info@assetcentric.com



CMMS EZ Entry

Now available for MP2!!!

Get a crystal clear picture of ALL your maintenance activity

Now you can Improve

- Reliability
- Productivity
- Quality
- Efficiency

It is easy when your CMMS data is

- Accurate
- Timely
- Comprehensive
- Affordable

Document ALL maintenance incidents – build a clear picture!!!



CMMS EZ Entry

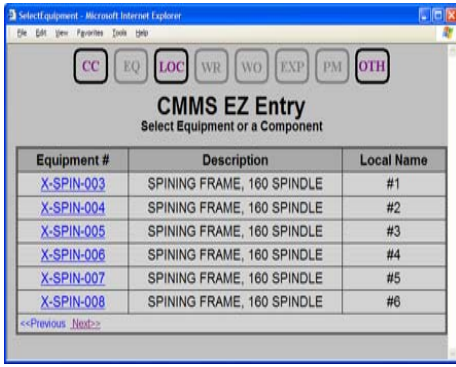
Now available for MP2!!!

- Reduce Training Time
- Reduce Operating Costs
- Increase Accuracy
- Increase Timeliness
- Reduce the need for MP2
Seat Licenses
- Choose your own page size
and style

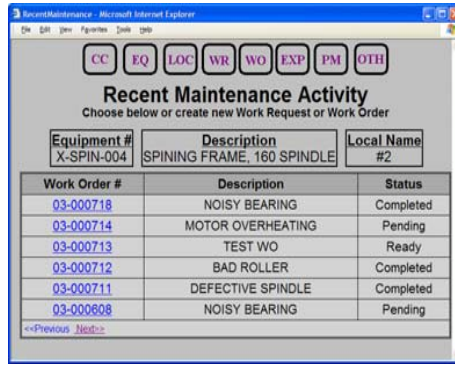
[Contact](#) us for a live over-the-Net demonstration of CMMS EZ Entry!!!

Call 864-201-5059 or e-mail info@assetcentric.com

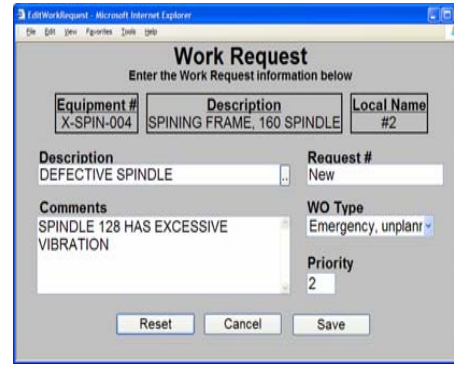
Using CMMS EZ Entry is as Easy as 1-2-3



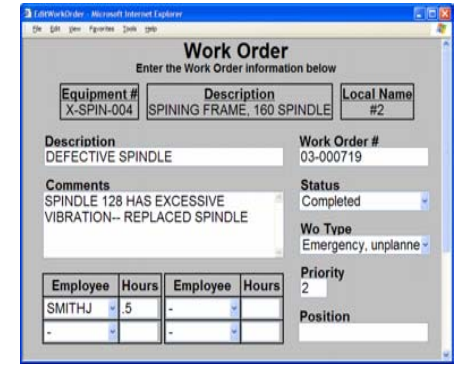
First, Choose The Equipment In A Cost Center– Drill Down On Components, If Needed



Next, View Recent Maintenance Activity, Including Pending Work Requests

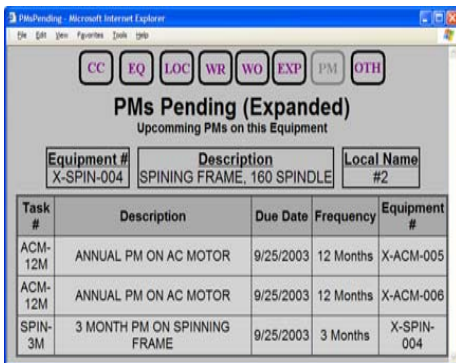


Finally, Create A Work Request If You Need A Repair

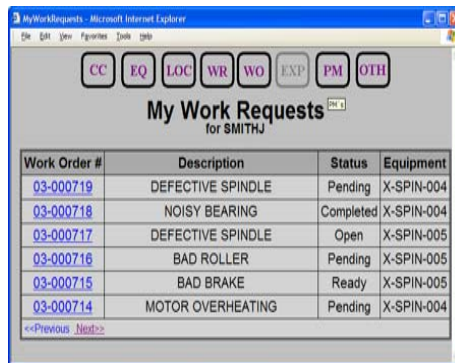


or, if you are in Maintenance, you can create and populate a Work Order

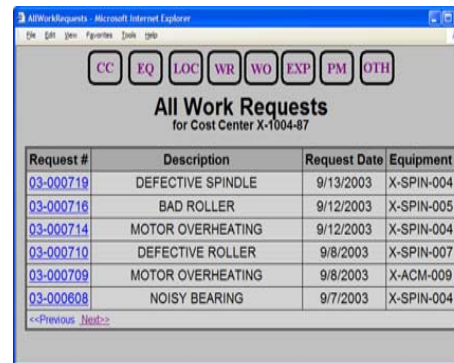
CMMS EZ Entry Facilitates Communication



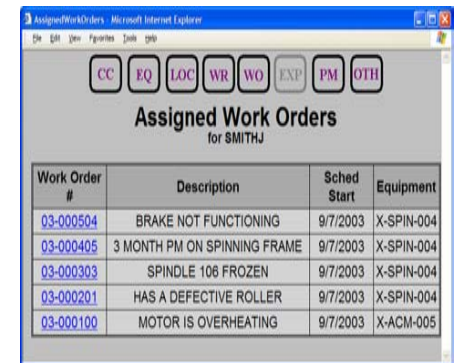
View Upcoming PMs That For This And Associated Components



Check The Status Of All Your Work Requests, Including Open And Closed Work Orders



View All Pending Work Requests, In A Single Cost Center, Or In All Cost Centers



List All Work Orders Assigned To You

What is CMMS EZ Entry?

CMMS EZ Entry facilitates quick and efficient communication between Maintenance and their customers. CMMS EZ Entry allows Maintenance to document the short procedure repairs that previously have gone undocumented. Now, for the first time, Maintenance will have an accurate and comprehensive picture of all maintenance activity.

CMMS EZ Entry does not replace the CMMS system. It integrates with CMMS and provides a more effective and efficient view into the CMMS database. CMMS EZ Entry provides an Equipment centric view throughout the process. CMMS systems often lose their Equipment centric focus in the Work Request and Work Order modules.

The key to CMMS EZ Entry's efficiency is the ability to present the user with fewer, but more relevant, choices. This eliminates the need to scroll through lots of irrelevant information, searching for the needed entry. The flexibility of CMMS EZ Entry, along with proper setup of the base CMMS data, allow Maintenance to reduce the CMMS operational cost, and, at the same time, increase the accuracy and comprehensiveness of the CMMS data.

CMMS EZ Entry is a very focused system. It does not Generate PM Work Orders, it does not Close Work Orders, it does not process Purchase Orders. The CMMS system does all that. CMMS EZ Entry simply provides a view into the CMMS database that is simple and efficient for creating Work Requests and Work Orders, and for updating Work Orders. It also displays recent Maintenance activity on Equipment as well as Upcoming PMs.

Like most software, CMMS EZ Entry requires planning to provide the maximum benefits. This document is designed to guide you through that planning process.

The number one problem in the use of most CMMS systems is the difficulty of finding the correct entry in the Equipment list. This list often contains over a thousand entries. Finding a way to filter the data is required for efficient operation of a CMMS.

CMMS EZ Entry solves this issue through the use of the Cost Center. Cost Centers have already been established for most operations and represent the most effective way to view the operation. Cost Centers are the basis for most budgeting and P&L reporting, so they are already well known throughout the company.

CMMS EZ Entry is designed for the user to select a Cost Center and then drill down into Equipment within that Cost Center. Equipment is presented at a high level, such as processing lines. Once a major piece of Equipment is selected, the user can quickly drill down to the desired level using only point and click. Sophisticated search and filter techniques are not needed.

CMMS EZ Entry is most effective when Equipment is classified by Cost Center and by parent-child relationships. The Cost Centers available to a user are determined by the setup associated with that user.

Many CMMS installations have complex Equipment numbering schemes. Often those schemes do not incorporate the "local name" of the Equipment. CMMS EZ Entry uses any of the User Defined Fields (UDF) to convey the Local Name of the Equipment.

CMMS EZ Entry also uses a UDF on Work Orders to document the failing position on Equipment that has multiple positions. CMMS EZ Entry will use any UDF the system administrator designates.

The corrective work required in a Cost Center tends to be re-occurring work. That is, the same issues tend to keep occurring. CMMS EZ Entry allows the Work Order or Work Request Description to be selected from a drop-down list. This list is created from Tasks that have a Frequency of 10 years and no Due Date, allowing a unique list to be created for any Cost Center.

CMMS EZ Entry allows the User to enter the Reason for Outage (RFO), Reason for Failure (RFF), and Solution (SOL) codes into the Work Order. The RFO Codes are segregated by Equipment Type. The codes classify incidents into categories to support further analysis and improvements in the Maintenance Processes.

CMMS EZ Entry simplifies the Labor entry process for Work Orders. Each User can select the field that will select their team. Crew, Craft, and Shift are the most logical choices, but any field in the Employee table can be used. CMMS EZ Entry will present the employees with a matching entry as a dropdown selection box. This enables the User to choose from a selected list of associates rather than from a list of all employees, making the process faster and more accurate.

In summary, CMMS EZ Entry is a system designed by Maintenance personnel for Maintenance personnel. Its sole function is to facilitate quick and accurate entry of Work Requests and Work Orders.

CMMS EZ Entry Features and Benefits

Finally, a user-friendly way to enter data into MP2

MP2 is a generalized CMMS, designed to have lots of functionality, and to adapt to a variety of situations. Unfortunately, the user interface is designed to take advantage of all this functionality. This leads to a complex interface more suitable for an analyst or a programmer than for a Maintenance person.

Screens designed by Maintenance folks for Maintenance folks

Most Work Requests and Work Orders, especially reactive ones, are for a single piece of Equipment. The Work Request and Work Order forms fit onto a single screen, no tabbing around looking for fields to fill in.

No lengthy scrolling; no filtering and searching; just point and click

The user simply selects a Cost Center from the list of Cost Centers he or she works in. The top level of Equipment in that Cost Center is presented. The user selects the high level piece of Equipment and, if necessary, drills down to the desired component – all point and click!

Save time for every Maintenance person, every day

Every minute a Maintenance person spends entering information is a minute not spent repairing the next piece of Equipment. Documenting all incidents in MP2 is necessary, but it should be done as rapidly and efficiently as possible.

Drill down on Equipment by Cost Center, then by Equipment hierarchy

Each user is presented a list of Cost Centers available to them. Once a Cost Center is selected, the highest level of Equipment in that Cost

Center is presented. The user can drill down to the desired component once a piece of Equipment is selected.

Everything, even Work Requests and Work Orders, is Equipment Centric

Once a piece of Equipment is selected, CMMS EZ Entry displays recent maintenance activity, including pending Work Requests, no matter who entered the Request. You see recent maintenance activity, including pending work request, as soon as you select the Equipment. You can view activity on just one piece of Equipment, or the entire Line of linked components simply by clicking on Expand.

See pending PMs with the touch of just one button

A single click on the PM button displays upcoming PMs. Another click on Expand displays PMs for all Equipment linked with the selected Equipment.

Choose from only your crew or team for labor entry

CMMS EZ Entry allows you to display only Employees with the same Crew, Shift, or Craft as the user. Choosing from a smaller number of entries is faster, more accurate.

No concurrent user limits, and, best of all, very affordable

CMMS EZ Entry talks directly to the MP2 database and does not use any MP2 User Seats. It is priced to allow all Maintenance personnel to receive Work Request and Work Orders online and to update their own Work orders, eliminating the redundant entry associated with paper Work Orders.